

ICOM

INSTRUCTIONS

CLONING SOFTWARE

CS-F3013

■ Getting started

- ◇ This cloning software is designed to perform data entry, settings and cloning for the IC-F3013/IC-F4013 series VHF/UHF TRANSCEIVERS.
- ◇ **HELP WINDOW:** The CS-F3013 has a help window to describe functions and operation.

■ System requirement

To use this program, the following hardware and software are required:

PC

- Microsoft® Windows® 98/98SE/Me/2000/XP is installed
- With RS-232C serial port (D-sub 9-pin) or USB port

Other item

- Optional OPC-478 CLONING CABLE (RS-232C type) or OPC-478U/478UC* CLONING CABLE (USB type)

* The USB driver, supplied with the OPC-478U/478UC, is not supported for Microsoft® Windows® 98.

NOTE:

When using the OPC-478, RS-232C type cloning cable, select "Normal" for the cloning speed setting in [COM port] menu of the cloning software. Otherwise, a cloning error may occur.

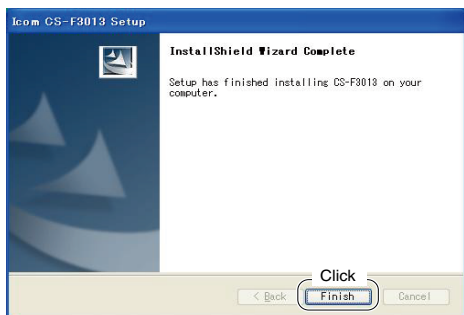
NOTE:

When using the OPC-478U/478UC*, USB type cloning cable, USB driver installation is necessary. The driver is supplied with the OPC-478U/478UC*. See the OPC-478U/478UC* instruction manual for details.

■ Software installation

When installing into a Windows XP or Windows 2000 environment, log in as the **administrator**.

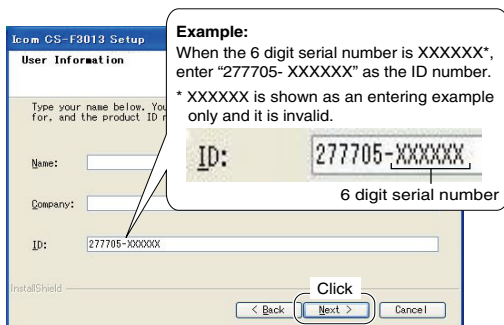
- ① Make sure Windows is started and no other applications are running.
- ② Insert the CD into the appropriate CD drive.
- ③ Double-click the "setup.exe" contained in the CD.
- ④ The "Welcome to the InstallShield Wizard for CS-F3013" will appear as shown below. Click [Next>].



- ⑤ The "User Information" will appear as shown below, then type your name, your company name and the product ID number with the following manner. Then click [Next >].

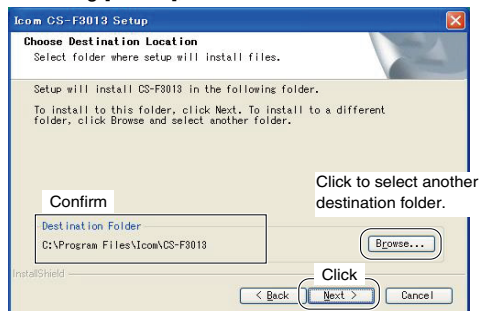
- ID number: 277705-(6 digit serial number)

Please check the serial number on the CD. If you have gotten the software by the download service, enter the ID which was provided from the distributor.

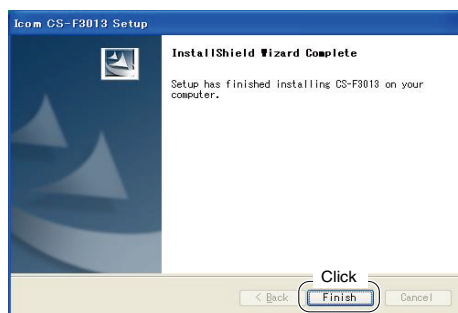


- ⑥ The "Choose Destination Location" will appear as shown below. Then click [Next>]

- Click [Browse...] to select another destination folder before clicking [Next >], if desired.



- ⑦ After the installation is completed, the "InstallShield Wizard Complete" will appear as shown below. Then click [Finish].



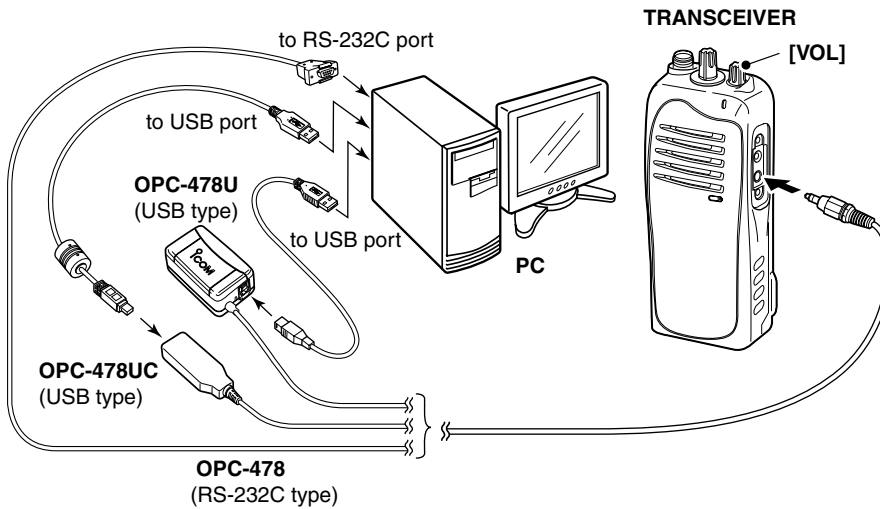
- ⑧ Eject the CD.
- ⑨ Program group 'CS-F3013' appears in the 'Programs' folder of the start menu, and 'CS-F3013' short cut icon appears on the desktop.

- To uninstall the cloning software, select the "Control Panel" in the start menu, and click the "Add or Remove Programs." Then, select the program group 'Icom CS-F3013' and click [Remove].

■ Connection

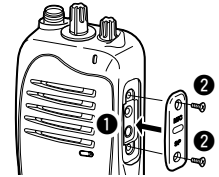
All cloning operations are performed from the PC's keyboard—the operation required on the transceiver side is;

- ① First, connect the cloning cable as illustrated below.
- ② And then rotate [VOL] to turn power ON.



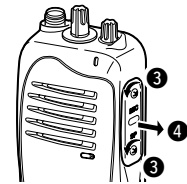
Attaching:

Attach the connector cover (①), then tighten the screw (②).




Detaching:

Unscrew the screws (③), then detach the jack cover (④).



■ Programming information

- We recommend that you should upload all the transceiver's data before start entering/editing parameters, even when the transceiver is factory fresh.
Click , or click [Clone] in the top menu of the cloning software and select "Read <- TR" to start uploading.
- Click [Model] in the top menu of the cloning software to select the model type of the transceiver which you are going to clone.
- NEVER turn off the transceiver and PC while uploading/writing cloning data. Otherwise, the data could be cleared.

Please refer to the help file of the cloning software for help with the function or setting meaning.

To open the help file, click [Help] in the top menu of the cloning software and select "Contents," or simply push the [F1] key of the PC's keyboard.

Icom, Icom Inc. and the Icom logo are registered trademarks of Icom Incorporated (Japan) in Japan, the United States, the United Kingdom, Germany, France, Spain, Russia and/or other countries.
Microsoft and Windows are registered trademarks of Microsoft Corporation in the United States and/or other countries.
All other products or brands are registered trademarks or trademarks of their respective holders.